

## Instructions for Slipcover

### Notions needed: 24" zipper

1. Pin pattern pieces on the fold of the fabric of your choice. Cut out fabric pieces.

2. Press under straight edges of top and bottom zipper portions of the zippered side 1/2".

3. Open zipper and pin the top portion to the correct side of an open zipper. Using a zipper foot, use straight stitch to topstitch along the zipper tape.

Repeat with other side of zipper.

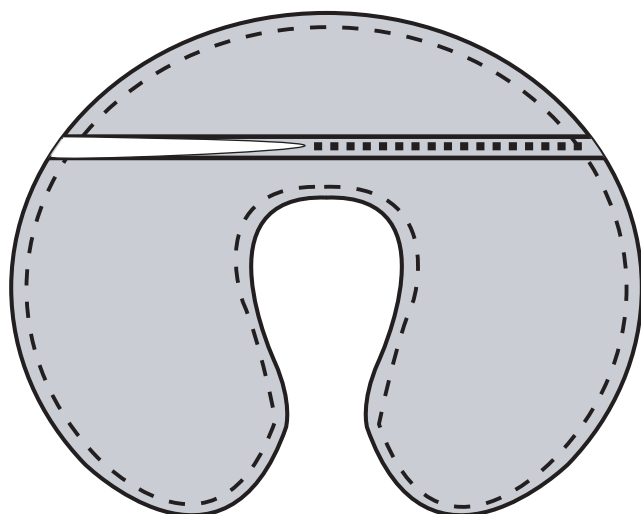
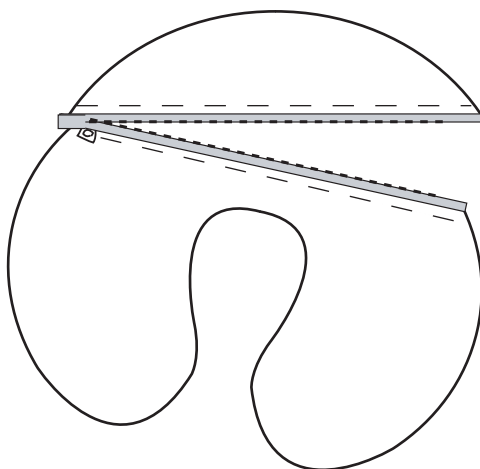
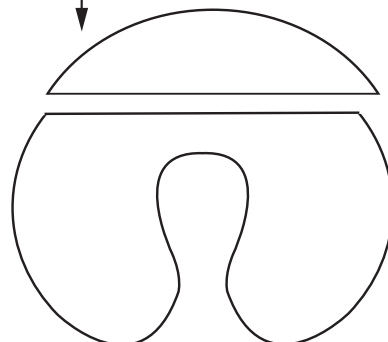
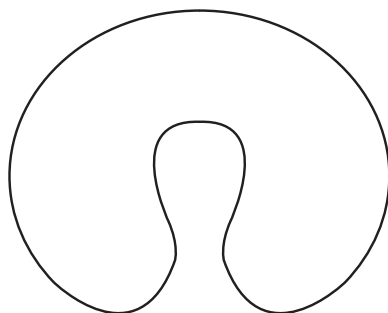
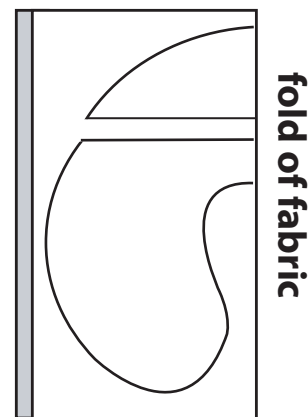
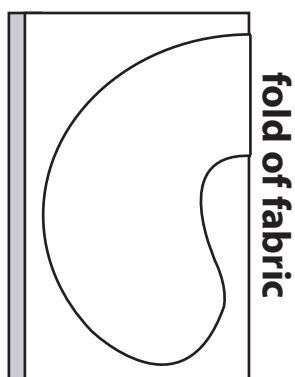
4. Close zipper halfway.

5. With right sides together, pin the main body piece to the zippered back piece.

6. Straight stitch a 1/4" seam all around.

7. Turn right side out through open zipper.

8. Try out your new cover!



right side of  
fabric



wrong side of  
fabric